

# MEDIA STREAM



## QUICK SETUP GUIDE

## WHAT YOU WILL NEED:

### 1. JVL Media Stream



### 2. JVL Echo with software version iTouch HD2 v1.0b or higher



### 3. Wi-Fi or Ethernet network with a broadband Internet connection

4. **Valid JVL Operator's account and password** (to obtain an account, visit [www.jvl.ca](http://www.jvl.ca) to register online for free or contact JVL Customer Support at 1-800-296-6657 Ext.

1)

## HOW TO SET UP MEDIA STREAM:

**Step 1:** Turn on the Echo's power, after boot up process is finished press the yellow "Setup" button located at the rear of the machine (behind the access door). From the opening (General/General Tab) on screen menu confirm (Enable Music) has a check mark beside it before beginning the installation. Save changes by touching the "Save" button in the bottom right corner of the screen.

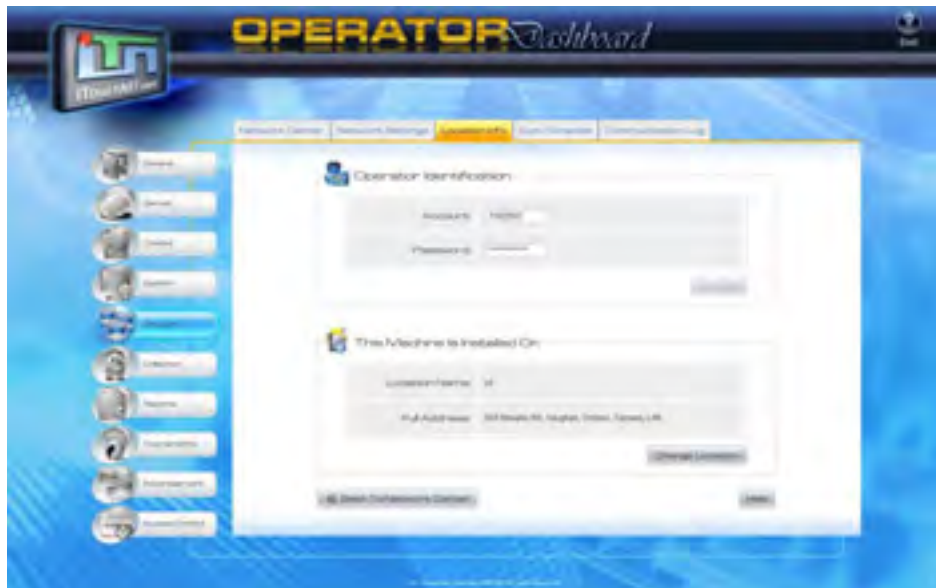
**Step 2:** Go to Setup/Network/Network Settings, select an available network, and establish an Internet connection. For WiFi choose the network from the list that will be presented and enter network encryption. If connection was successful for the selected WiFi or Ethernet the status of this network will present a green check mark and show (Connected).



**Step 3:** Go to Setup/Network/Location Info, if you already have an account and existing location for it, enter Operator Identification (Account and Password). Touch the "Subscribe" button in the Operator Identification section when done.

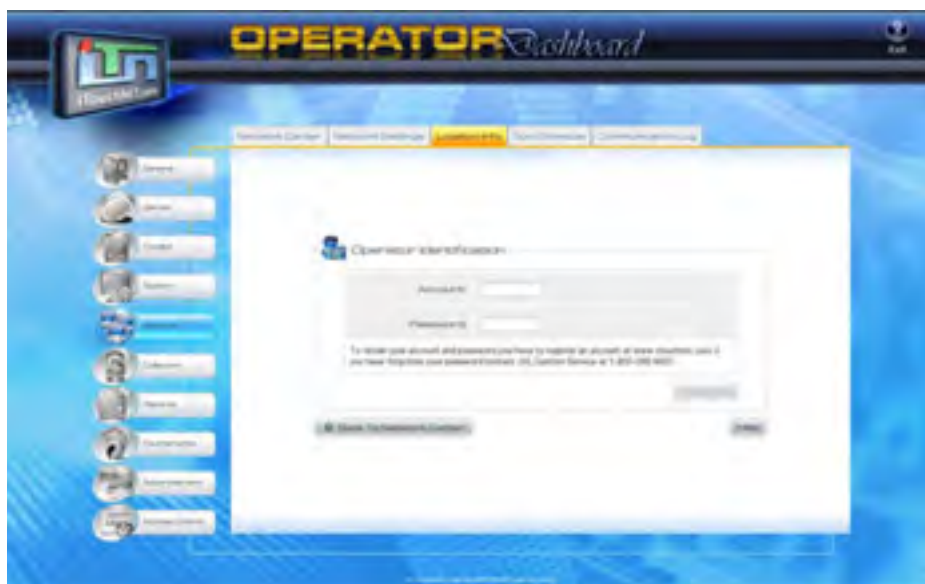
If your account has locations pre-installed, it can be selected from "This Machine is Installed On" section or a new one for this machine can be installed.

## HOW TO SET UP MEDIA STREAM:



In case a new operator account is required, the following steps can be used to create it:

- a. Obtain your account and password prior to the installation, registering at [www.itouchnet.com](http://www.itouchnet.com).
- b. Go to Setup/Network/Location Info and enter your new account and password



## HOW TO SET UP MEDIA STREAM:

- c. As soon as the account and password for the Operator Identification have been saved, the Location section (“Your Machine is Installed On”) is available. Click “Add Location” button and insert Location Name and Full Address information.



The screenshot shows the OPERATOR Dashboard interface. A modal window titled "Add Location" is open, displaying "Step 1 of 2". The form contains the following fields:

- Location Name: Company
- Address: Greench 4 2 78
- Country: United States
- State/Province: Connecticut
- City: Middletown
- ZIP: 06457

Buttons for "Submit" and "Cancel" are visible at the bottom right of the form.

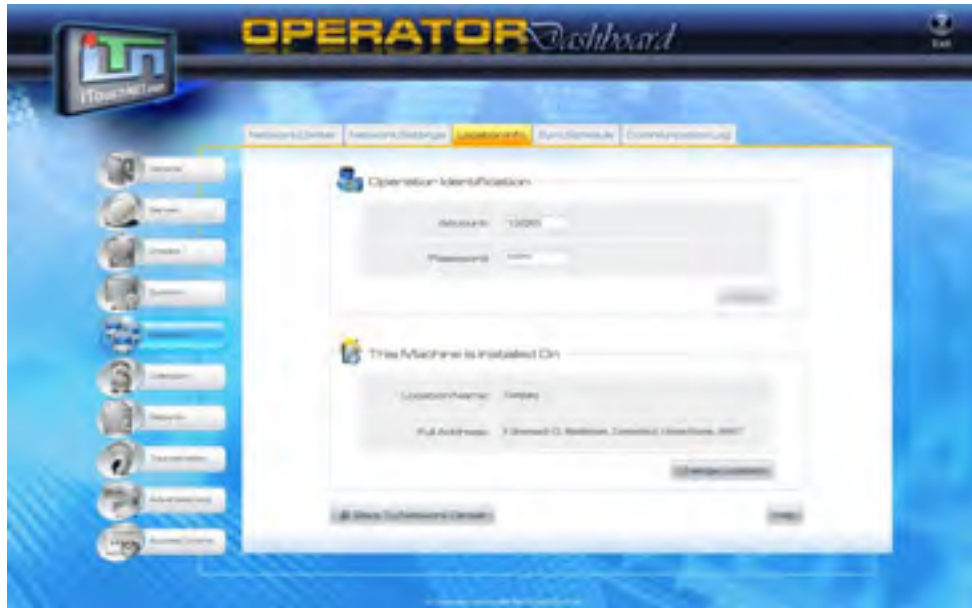
- d. Click “Submit” button. When “Address verified” message appears, click “Confirm” button.



The screenshot shows the OPERATOR Dashboard interface. The modal window titled "Add Location" is now in "Step 2 of 2". The form fields are the same as in Step 1. A green message "Address verified" is displayed at the bottom of the form. Buttons for "Back" and "Confirm" are visible at the bottom right of the form.

## HOW TO SET UP MEDIA STREAM:

- e. Now your location has been successfully created.

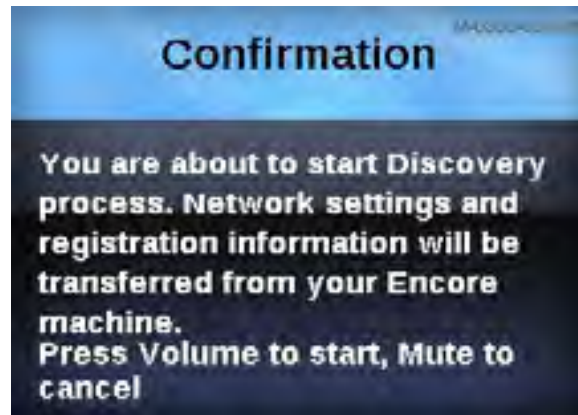


**Step 4:** Go to Setup/Network/Network Center and make sure the Network Settings field has a green dot beside it (indicating your machine is connected to the Internet). Touch the "Sync Tournaments" button.



## HOW TO SET UP MEDIA STREAM:

**Step 5:** Power up your Media Stream by plugging in the power adapter (there is no power switch). Please wait a moment for the Media Stream to initialize. It will then enter Confirmation and Discovery mode. All factory-new Media Streams automatically enter this mode after powering up and initializing. If device does not boot into discovery mode, enter the menu (by pressing in the volume dial once and again this time holding in), this will take you into Setup. Turn the dial clockwise until you see “Discover JVL Network”, press the volume dial once to select the option. Confirmation message appears



Press the volume dial again to confirm and to start the process. “Configure network” will appear shortly.



## HOW TO SET UP MEDIA STREAM:

Wait till the next message shows that your Media Stream is ready to get data from your Echo:

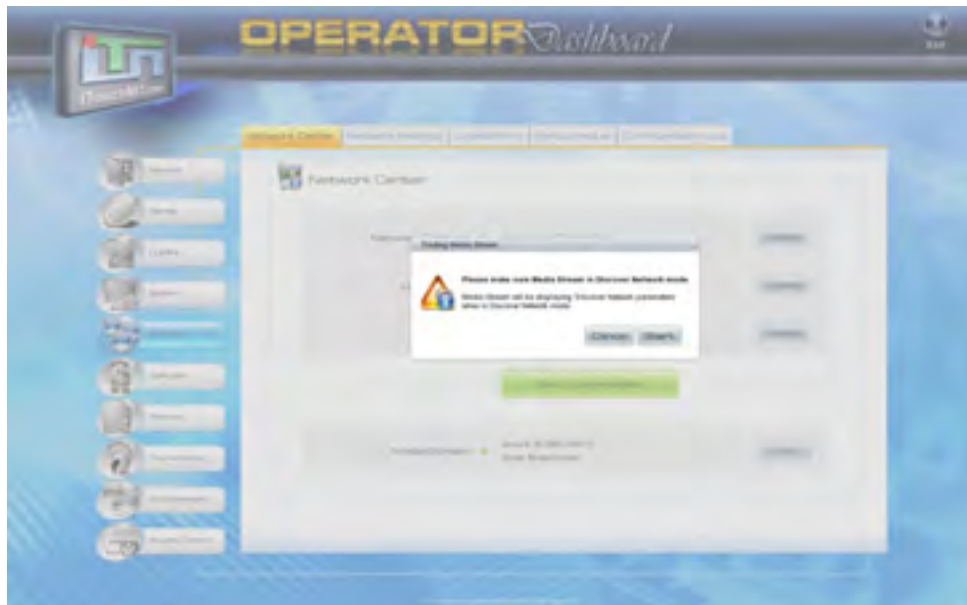


**Step 6:** After the media box shows “Waiting for Echo”, return to your game machine, go to Setup/Network/Network Center and touch the “Find” button. You will have to stream your Encore together with the Media Stream.



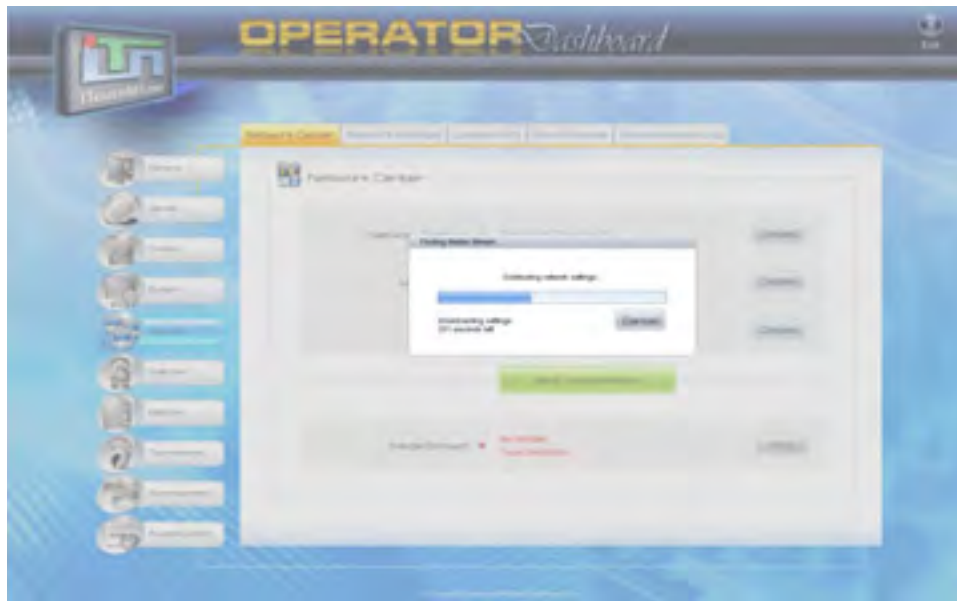
## HOW TO SET UP MEDIA STREAM:

PLEASE NOTE: The following communication window will appear on the Echo: “Please make sure Media Stream in Discover Network Mode. Media Stream will be displaying ‘Discover JVL Network’ when in Discover Network mode.” Touch the Start button.

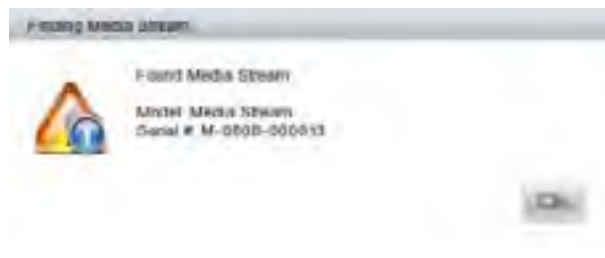


**Step 7:** A dialogue window (Finding Media Stream) will appear while the Echo communicates with the Media Stream. This dialogue may take a couple of minutes, so please be patient.

## HOW TO SET UP MEDIA STREAM:



When the link has been established, a window stating “Found Media Stream” will appear.

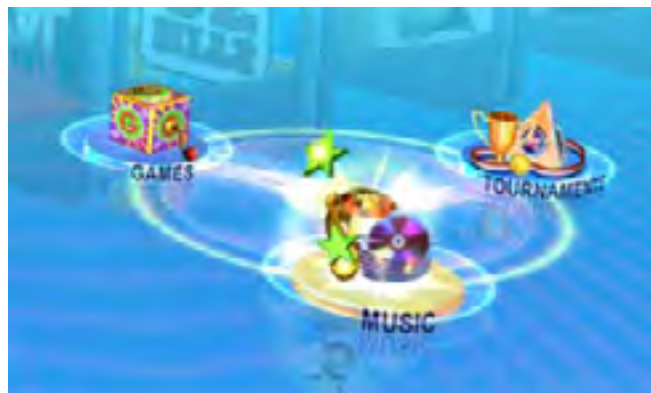


Click the “OK” button to close the window. Check in Setup/Network/Network Center that Media Stream has a green indicator beside it. After that open Setup/Network/Network Settings to make sure the status of JVL Music Service is “Connected”.

## HOW TO SET UP MEDIA STREAM:



**Step 8:** Exit the Echo Setup menu by touching the “Exit” button in the top-right corner of the screen. A Music button will appear in the bottom-right corner of the Encore’s Graphic User Interface.



**Step 9:** Click the Music button to begin searching for songs and enjoying your Media Stream!

*If, at any stage of this installation process you encounter problems, contact JVL Customer support at 1-800-296-6657 Ext.1 and one of our reps will guide you through the rest of the process and assist with troubleshooting.*